



KONICA MINOLTA

TECHNOLOGY



bizhub® 558, 458

MONOCHROME MID-VOLUME MULTIFUNCTION PRINTERS



DESIGNED FOR EFFICIENCY. PRODUCTIVITY. AND PERFORMANCE.

Built to function the way your business needs it to: reliably.

Ready to get more done in less time? Konica Minolta's bizhub 558 series redefines efficiency. It marries high function and productivity with broad-based solution connectivity that supports a wide variety of work styles. It works the way you need it to—helping your business run faster, smoother and ultimately, smarter. What's more, the bizhub 558 and 458 are enhanced with an intelligent 9" multi-touch display panel that's as easy to use as a tablet.

With robust security features and environmental performance that always considers our planet, the bizhub 558 series is just another way Konica Minolta gives shape to ideas that improve office work efficiency.

ENHANCED FUNCTIONS ENSURE BETTER INPUT/OUTPUT TASKS

The bizhub 558 series improves on a number of pivotal MFP functions. First, scanning/printing image quality are now superb. Secondly, the input/output tasks, including functionality and productivity when handling large-volume data, have been enhanced.

OPERABILITY TO IMPROVE WORK EFFICIENCY

The 9" electrostatic multi-touch panel is all about the user. This smart panel is as simple to use as a tablet. Every operating section has improved functionality, providing more efficiencies in your day-to-day workflow. And its smooth operability puts convenience at every user's fingertips.

UPGRADED SOLUTION CONNECTIVITY SUPPORTS WIDE VARIETY OF WORK STYLES

Your office is unique. That's why we designed the bizhub 558 and 458 to accommodate different work styles—and perform robustly for any workflow. Mobile device connectivity, cloud service and external business applications are all supported.



AT A GLANCE bizhub 558/458 Series

- Speeds up to 55 ppm
- Dual scanning up to 160 opm
- Large 9" touchscreen display with integrated standard web browser
- Built-in Emperon® print system
- 6,650 sheet maximum capacity
- Automatic paper sizing measurement
- Three finishers to choose from with a variety of post-processing options

IMPROVED TO EXCEED OUR OWN EXPECTATIONS.

It's our job to develop solutions that help you get your job done faster. Easier. And with better results. That's why we've upgraded the bizhub 558 and 458 with a number of improvements that benefit your business as soon as you start using them.

AUTOMATIC PAPER SIZE MEASUREMENT

The bizhub 558 and 458 can measure non-standard sized paper automatically—making your job easier. Simply load paper into the ADF or glass platen, then press the MFP start button. The MFP will automatically measure paper size and register the measurement into the memory.

1200 DPI FOR STUNNING DETAIL

With print resolution of 1200 dpi, the bizhub 558 and 458 reproduce small text and fine lines with crisp clarity and detail. The thickening of lines that occurs during printing can be adjusted—so that any lines requiring precision and accuracy (for example, a narrow font or barcodes) can now be printed with sharp high-definition.

IMPROVED COMPACT PDF

Now you can scan files to PDF format and not worry about running out of storage space. Image noise has been reduced and image quality has been improved, while also producing smaller compact PDF file sizes.

SIMPLE CUSTOMIZATION

And there's more. Now, just by logging into your free account on the bizhub MarketPlace website, you have immediate access to an easy to use, drag-and-drop tool that allows you to create customized touchscreens for your MFP. With this MFP User Interface (UI) Designer Tool, you can add or delete functions to streamline your workflow, customize the UI with company colors, images and logos, and even copy and share personalized MFP UIs that you've designed with other bizhub MarketPlace users.

SAFER PROCESSING OF CONFIDENTIAL INFORMATION

The bizhub 558 series is equipped with TPM (Trusted Platform Module), a chip dedicated to encryption processing for added security. TPM enhances security by completing the encryption process within the chip thereby eliminating the exchange of encryption keys between the hard disk and CPU during encryption. It conforms to the highest levels of security requirements, including standards set by the United States Government.



THE BIZHUB MARKETPLACE

The bizhub MarketPlace is your source for all the apps you need to keep you informed, enhance the MFP experience and accelerate your business. Whether through your internet connected bizhub or your desktop computer, access to the bizhub MarketPlace is smart, easy and convenient.

YOUR ONE-STOP SHOP

As the award-winning recipient of BLI's 2017 Outstanding MFP App Ecosystem, bizhub MarketPlace is a great source for cutting-edge technology—and with new apps being developed all the time, your bizhub MFP will become even more powerful as you add new capabilities in all the right categories. Scanning, printing, social networking, security, document management, and cloud-based apps are all easy to access and designed to help increase productivity.

GET IT ALL

When Konica Minolta created bizhub apps, we also created the bizhub MarketPlace: a simple, user-friendly gateway that makes it easy to access, explore and download the apps that are most important to streamlining your workflow, improving your productivity and enhancing your user experience.



TAKE YOUR **BUSINESS** FURTHER.

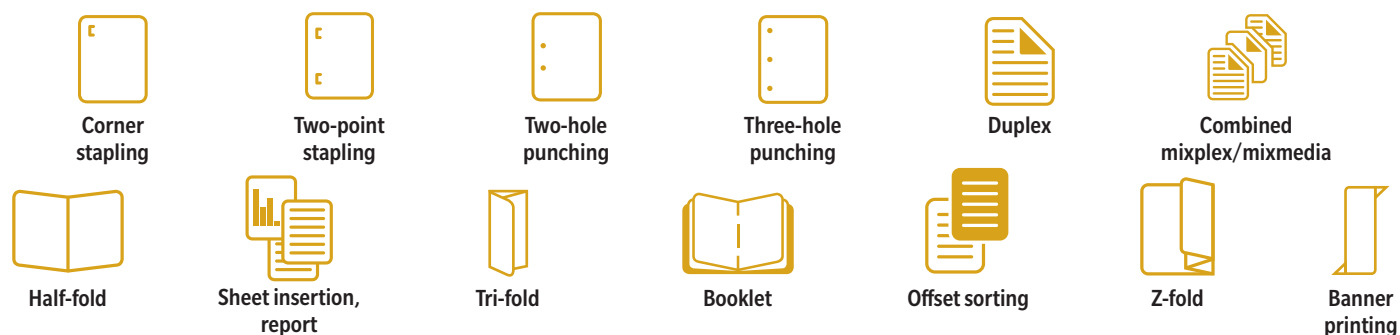
Innovation that works harder for you.

POWERFUL FINISHING OPTIONS FOR ALL KINDS OF MEDIA.

CREATE A VARIETY OF PRINTED MATERIALS IN-HOUSE

The bizhub 558 series supports a wide range of high-level finishers for various types of outputs. Multiple finishing options. One single unit. The newly developed FS-537-537SD finisher handles a wide range of tasks such as z-folding, tri-folding, booklet making, hole-punching, 100-sheet stapling and more. Now with a reduced footprint and internal z-folding unit, making installation faster and easier. The result is a finisher that's become the industry standard for compactness.

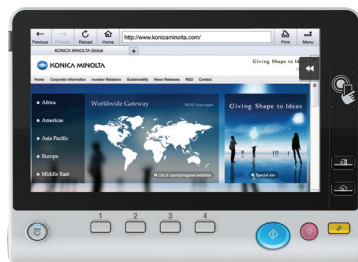
For more options you also have the FS-536/536SD floor finisher with 50-sheet stapling. If you don't want to add to the footprint of your MFP at all we have the FS-533 inner finisher, an economical and versatile finishing solution.



THE RIGHT TOOLS TO IMPROVE YOUR CAPABILITIES.

WEB BROWSER AND IWS FUNCTIONS

Allows users to access the web directly from the bizhub control panel. You can access HTTP pages, preview PDF files and search and view manuals written in HTML. This function is standard.



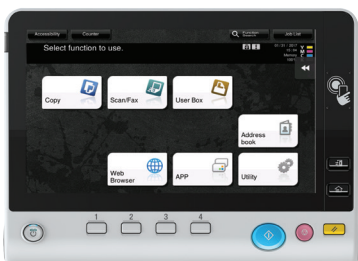
CHECK THE POWER USAGE STATUS THROUGH THE ECO INDEX

Visualize the level of eco-contribution by checking the percentage of 2-sided original printing, color printing and page consolidation and the cumulative time spent on waiting/operation.



CUSTOMIZE THE MAIN MENU

Up to 23 shortcut keys can be set in the main menu for quick and easy access to frequently used functions.



WIDGETS

Users can paste text boxes, icons or GIF animation clips as widgets on the control panel. Advertisements and operating precautions can also be effectively displayed.

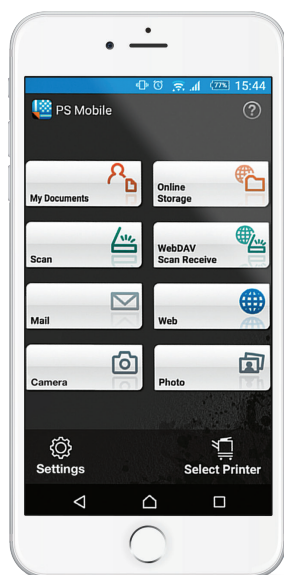


MOBILE PRINTING

The bizhub 558 series supports various mobile print technologies. It's flexible to suit your user environment, such as Google Cloud Print Classic which enables output outside the office, and Mopria.

The operation panel includes a mobile touch area compatible with devices that support NFC (Near Field Communication). By holding devices installed with PageScope Mobile over the NFC area, you'll be able to:

- Pair immediately with the MFP
- Log into the unit if user authentication is set
- Print or scan



WIRELESS CONNECTIVITY

Wireless extension functions, AP mode and Wi-Fi Direct are supported, enabling an optimum setup to match any office network environment. Flexible support for BYOD and new connection environments can be built without making additional investments.

AUTHENTICATION

We provide powerful security safeguards and systems, including an optional built-in IC card reader for fast, simple ID card authorization. Our bizhubs accept Biometric Authentication, input for HID Proximity Cards, iClass Cards and Magnetic Stripe Cards, and CAC/PIV Card* support. Since user authentication is one of the key factors for ensuring security, choose from a magnetic card, a PIN code or a biometric fingerprint scan. Individual access rights can be defined for each user.

*Not available at time of launch

SUPPORTS HDD MIRRORING

HDD Mirroring is the real time synchronization of main HDD and optional backup HDD. Risk of losing data is reduced significantly, even if the main HDD fails, as it automatically switches to the optional HDD.

CARBON COPY

This feature allows you to print the same original on different sheets of paper loaded in multiple trays in one command. Because you can obtain printing results that look like carbon-copied slips using the print command once, this function is called Carbon Copy.

SECURITY

Konica Minolta's bizhub SECURE, a professional security service, provides a powerful level of lock-down protection that guards your bizhub from unauthorized operation. Our IEEE 802.1X SSL and IPsec protocol authentication methods allow easy integration into protected networks, plus secure network communication. Virtually all bizhub systems conform to the ISO 15408 EAL3 standard, meeting the highest international security standards.

EASY SET ECO FUNCTIONS

ON THE MAIN MENU

Toner/paper saving, power saving or any Eco function shortcuts can be registered on the main menu. The cumulative power consumption is displayed as a list or graph on a monthly/hourly basis.

• Register Eco Mode

Shortcuts on the Main Menu

If the Eco function is set on the administrator screen, the shortcut button for any Eco function can be displayed on the main menu. Any of the Eco functions, namely Eco setting/Eco copy/Eco index can be directly accessed.

• Control Power Consumption with Eco Setting

One touch settings are available to reduce the brightness of the touch panel or to turn the animation display off and thereby controlling power consumption.



bizhub 558/458

MONOCHROME MID-VOLUME MULTIFUNCTION PRINTERS

SYSTEM OVERVIEW

System memory	4 GB
System hard disk	250 GB Standard
Interface	10-BASE-T / 100-BASE-TX / 1,000-BASE-T Ethernet, USB 2.0
Network protocols	TCP/IP (IPv4/IPv6), SMB, LPD, IPP, SNMP, HTTP, HTTPS
Frame types	Ethernet 802.2, Ethernet 802.3, Ethernet II, Ethernet SNAP
Document feeder (optional)	Up to 100 originals / 5.5" x 8.5" to 11" x 17" / 35–163 gsm, Reversing automatic document feeder or dual scan document feeder available
Printable paper size	Scanning/Copying: up to 11" x 17" Printing: up to 11" x 17" full bleed on 12" x 18" paper Custom paper sizes Banner paper max.: 11.75" x 47.25"
Printable paper weight	52–300 gsm
Paper input capacity	Standard: 1,150 sheets / Max.: 6,650 sheets
Tray 1	500 sheets / 5.5" x 8.5" to 11" x 17" / 52–256 gsm
Tray 2	500 sheets / 5.5" x 8.5" to 12" x 18" / 52–256 gsm
Tray 3 (optional)	500 sheets / 5.5" x 8.5" to 11" x 17" / 52–256 gsm
Tray 4 (optional)	2 x 500 sheets / 5.5" x 8.5" to 8.5" x 11" / 52–256 gsm
Large capacity tray LU-207 (optional)	2,500 sheets / 8.5" x 11" to 12" x 18" / 52–256 gsm
Large capacity tray LU-302 (optional)	3,000 sheets / 8.5" x 11" / 52–256 gsm
Large capacity tray PC-410 (optional)	2,500 sheets / 8.5" x 11" / 52–256 gsm
Manual bypass	150 sheets / 4" x 6" to 12" x 18" / custom paper sizes / 50–300 gsm
Automatic duplexing	5.5" x 8.5" to 12" x 18" / 52–256 gsm
Finishing modes	Offset, group, staple, sort, punch, half-fold, z-fold, tri-fold, post-insertion, booklet
Output capacity	Max. with finisher: 3,200 sheets Max. without finisher: 250 sheets
Stapling (optional)	Max.: 100 sheets or 94 sheets + 2 cover sheets (up to 209 gsm)
Stapling output capacity	Max.: 1,000 sheets
Tri-fold (optional)	Up to 3 sheets
Tri-fold capacity	Max.: 30 sheets (tray)
Booklet (optional)	Max.: 20 sheets or 19 sheets + 1 cover sheet (up to 209 gsm)
Booklet output capacity	Max.: 100 sheets (tray)
Copy/print volume	Max.: 458: 200,000 pages / month ¹ 558: 250,000 pages / month ¹
Toner lifetime	24,400 pages
Imaging unit lifetime	458: 155,000 pages / 600,000 pages (drum / developer) 558: 160,000 pages / 600,000 pages (drum / developer)
Power consumption	120 V / 60 Hz, less than 0.5 kW (system)
System dimensions	24.2" x 27" x 31" (W x D x H)
System weight	Approx. 205 lb

PRINTER SPECIFICATIONS

Print resolution	1,800 x 600 dpi, 1,200 x 1,200 dpi
PDL	PCL6 (XL 3.0), PCL5c, PostScript 3 (ver. 3016), XPS
Operating systems	Windows (x32/x64): Vista / 7 / 8 / 10 Windows Server (x32/x64): 2003 / 2008 / 2008 R2 ³ / 2012 ³ Macintosh OS X 10.7 or later Linux / Citrix
Printer fonts	80 PCL Latin, 137 PostScript 3
Print functions	Direct Print of PCL, PS, TIFF, XPS, PDF, encrypted PDF files and OOXML (DOCX, XLSX, PPTX), mixmedia and mixplex, "Easy Set" job programming, overlay, watermark, copy protection, carbon copy print

COPIER SPECIFICATIONS

Copying process	Electrostatic laser copy, tandem, indirect
Toner system	Simitri HD Polymerized Toner
Print speed (8.5" x 11")	458: Up to 45 ppm (portrait) 558: Up to 55 ppm (portrait)
Print speed (11" x 17")	458: Up to 22 ppm (portrait) 558: Up to 27 ppm (portrait)
Autoduplex speed (8.5" x 11")	458: Up to 45 ppm (portrait) 558: Up to 55 ppm (portrait)
1st copy out time	458: 4.0 sec. 558: 3.5 sec.
Warm-up time	458: Approx. 25 sec. ² 558: Approx. 22 sec. ²
Copy resolution	600 x 600 dpi
Gradations	256 gradations
Multi-copy	1–9,999
Original format	Up to 11" x 17"
Magnification	25–400% in 0.1% steps, auto zooming
Copy functions	Electronic sorting, multi-job, adjustments (contrast, sharpness, image density), proof copy, interrupt mode, color mode, separate scan, sort/group, combination, original selection, ID card copy, 2-in-1, 4-in-1

SCANNER SPECIFICATIONS

Scan speed	B&W / Color: up to 160 opm
Scan resolution	Max.: 600 x 600 dpi
Scan modes	Scan-to-Email, Scan-to-SMB, Scan-to-FTP, Scan-to-Box, Scan-to-USB, Scan-to-WebDAV, Scan-to-DPWS, Network TWAIN scan
File formats	JPEG, TIFF, PDF, PDF/A 1a and 1b (optional), compact PDF, encrypted PDF and searchable PDF (optional), XPS, compact XPS, PPTX and searchable PPTX (optional), searchable DOCX/XLSX (optional)
Scan destinations	2,100 (shared with fax), LDAP support
Scan functions	Annotation (text/time/date) for PDF, up to 400 job programs, realtime scan preview

FAX SPECIFICATIONS

Fax	Super G3 (optional)
Transmission	Analog, Internet Fax, Color i-Fax, IP-Fax
Resolution	Max.: 600 x 600 dpi (ultra-fine)
Compression	MH, MR, MMR, JBIG
Modem	Up to 33.6 Kbps
Destinations	2,100 (single + group)
Functions	Polling, time shift, PC-fax, receipt to confidential box, receipt to email/FTP/SMB, up to 400 job programs

USER BOX SPECIFICATIONS

Storable documents	Max.: 3,000 documents or 10,000 pages
Type of user boxes	Public Personal (with password or authentication) Group (with authentication)
Type of system boxes	Secure print, encrypted PDF, fax receipt, fax polling, annotation
User box functionality	Reprint, combination, download, sending (email/FTP/SMB and fax), copy box-to-box

SYSTEM FEATURES

Security	ISO 15408 EAL ⁴ IEEE 2600.1 ⁴ IP filtering and port blocking SSL2, SSL3 and TLS 1.0 network communication IPsec support IEEE 802.1x support FIPS 140-2 User authentication Authentication log Secure print Hard disk overwrite (8 standard types) Hard disk data encryption (AES 128) Memory data auto deletion Confidential fax receipt Print user data encryption Copy protection (Copy Guard, Password Copy) optional
Accounting	Up to 1,000 user accounts Active Directory support (user name + password + email + SMB folder) User function access definition Optional Biometric authentication (finger vein scanner) Optional ID card authentication (ID card reader)
Software	PageScope Net Care Device Manager PageScope Data Administrator PageScope Box Operator PageScope Direct Print Print Status Notifier Driver Packaging Utility Log Management Utility

¹ Maximum monthly duty cycle describes the maximum number of pages a device can output on a monthly basis. This specification is a guideline intended to offer a comparison of durability as it relates to the entire Konica Minolta MFP and printer product line so that the appropriate device can be placed in order to meet customer needs

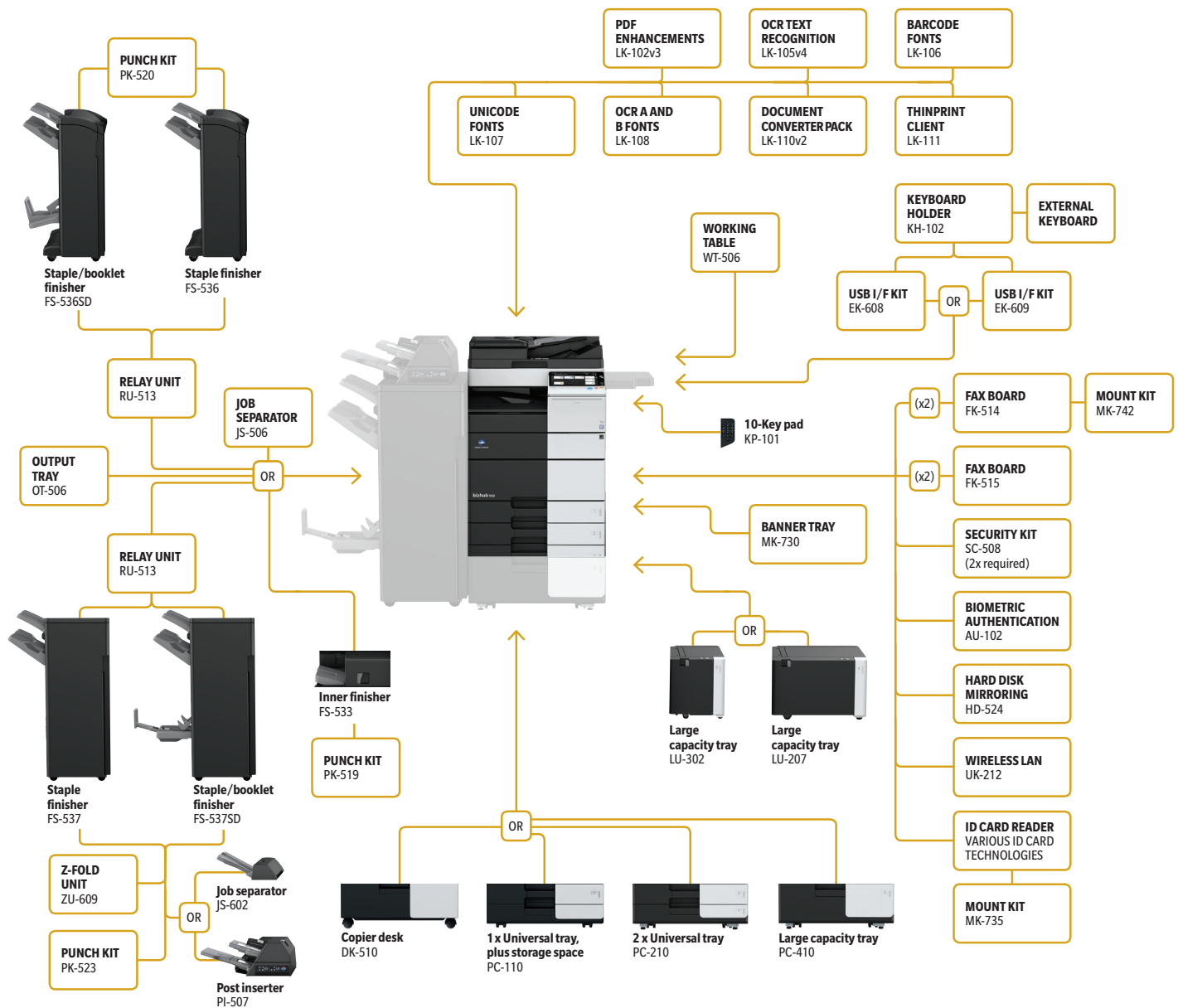
² Warm-up time may vary depending on the operating environment and usage

³ Supports x64 only

⁴ Certification pending

ENGINEERED FOR YOUR WORK NEEDS.

The bizhub 558 and 458 series are all about flexibility. It's adaptable, offering more power in less space, simple control and plug-and-play integration. The host of flexible options allows you to build the MFP solution that suits your specific needs.





INNOVATION THAT PUTS OUR PLANET FIRST.

Protecting the planet has always been a top priority at Konica Minolta. Our broad array of environmental initiatives will help you realize your own sustainability goals:

CLEAN PLANET

Our program provides cost-free recycling for all our consumables, including toner cartridge and bottles, imaging units, developer and drums with prepaid shipping labels and cost-free packaging. We can even arrange pick-up from high-volume users.

SUSTAINABILITY

Our exclusive Simitri HD toner formulation uses plant-based biomass material to reduce environmental impact. The latest bizhub models are EPEAT-Gold Certified and achieve among the lower power consumption rate of MFPs in their class. Energy saving modes reduce power consumption while maintaining fast first-copy output—and a unique Eco-indicator helps you monitor paper, toner and energy usage.

ECOVISION 2050

We're committed to a mid-century goal of reducing CO₂ emissions by 88% over 2005 levels, minimizing greenhouse gases that may contribute to global warming. We pursue that goal every day—minimizing energy consumption, cutting pollution and using recycled materials in construction.



For complete information on Konica Minolta products and solutions, please visit: CountOnKonicaMinolta.com



PARTNERSHIP

Konica Minolta can help give shape to your ideas and partner with you to achieve your corporate objectives. Contact us to realize opportunities in:

INFORMATION MANAGEMENT

- Enterprise Content Management (ECM)
- Document Management
- Automated Workflow Solutions
- Business Process Automation
- Security and Compliance
- Mobility
- eDiscovery Services

IT SERVICES

- Application Services
- Cloud Services
- IT Security
- Managed IT Services
- IT Consulting & Projects

TECHNOLOGY

- Office Multifunction Business Solutions
- Commercial and Production Printers
- 3D Printers
- Wide Format Printers
- Laptops, Desktops and Computer Hardware
- Servers and Networking Equipment
- Managed Print Services (MPS)
- Managed Enterprise Services



KONICA MINOLTA

KONICA MINOLTA BUSINESS SOLUTIONS U.S.A., INC.
100 Williams Drive, Ramsey, New Jersey 07446

CountOnKonicaMinolta.com



Item #: 558BRO
5/2017-C